

MONTHLY MEMBERSHIP PROGRESS REPORT

LOCATION ALBERTA

District C 2

Results as of: 2/28/2022

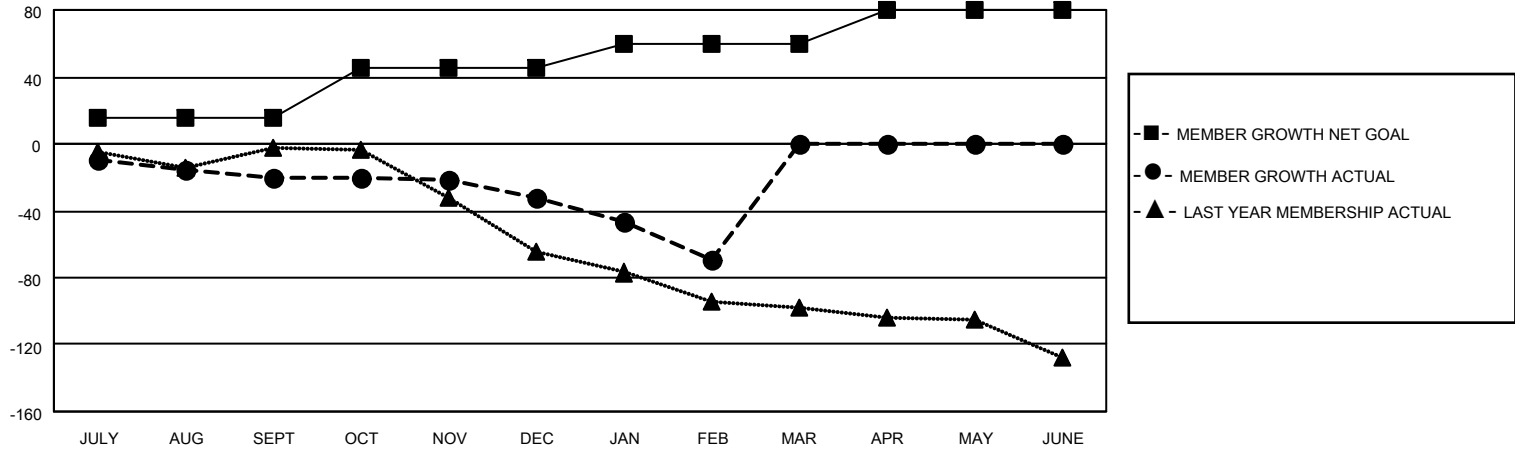
Clubs			
RESULTS FOR 2021-2022			
QUARTER	NEW CLUB GOAL	NEW CLUBS	DROPPED CLUBS
JULY/AUG/SEPT	0	0	0
OCT/NOV/DEC	1	0	0
JAN/FEB/MAR	0	0	1
APR/MAY/JUNE	0	0	0

Members			
RESULTS FOR 2021-2022			
QUARTER	MEMBER GROWTH NET GOAL	MEMBER GROWTH ACTUAL	DROPPED MEMBERS ACTUAL (including transfers)
JULY/AUG/SEPT	15	23	43
OCT/NOV/DEC	30	52	58
JAN/FEB/MAR	15	15	50
APR/MAY/JUNE	20	0	0

GOALS AND ACTUAL NEW CLUBS CUMULATIVE



GOALS AND ACTUAL MEMBERS CUMULATIVE



DROPPED CLUBS: 1

30 CLUBS OF 87 ADDED 1 OR MORE NEW MEMBERS

GENDER DISTRIBUTION

MALE	1,374 (75.08%)
FEMALE	456 (24.92%)
NON BINARY	0 (0.00%)
PREFER NOT TO ANSWER	0 (0.00%)

DROPPED MEMBERS

[CLICK HERE FOR CUMULATIVE MEMBERSHIP DATA](#)

DECEASED	26
CLUB CANCELLED	14
OTHER	111
TOTAL	151

TOTAL FAMILY UNIT MEMBERS	239
FAMILY MEMBERS PAYING HALF DUES	123